



TSXV: CD

## Developing Canada's Next High Grade Silver- Lead-Zinc Project

203-1634 Harvey Ave., Kelowna, BC, Canada

February 2019

Tel: +1 250 860 8582 Fax: +1 250 860 1362

## *Disclaimer*

This presentation does not constitute or form part of any offer for sale or solicitation of any offer to buy or subscribe for any securities in Cantex Mine Development Corp. ("Cantex"), nor shall it or any part of it form the basis of, or be relied on in connection with, or act as any inducement to enter into, any contract or commitment whatsoever. No reliance may be placed for any purpose whatsoever on the information or opinions contained in this presentation or on any other document or oral statement or on the completeness, accuracy or fairness of any such information and/or opinions. No undertaking, representation, warranty or other assurance, express or implied, is made or given by or on behalf of Cantex or any of its respective directors, employees or advisers, as to the accuracy or completeness of the information or opinions contained in this presentation, and (save in the case of fraud) no responsibility or liability is accepted by any of them for any such information or opinions or for any errors, omissions, misstatements, negligence or otherwise contained or referred to in this presentation.

The slides and the accompanying verbal presentation are confidential and the slides are being supplied to you solely for your information and may not be reproduced or distributed to any other person or published, in whole or in part, for any person. The slides contain forward-looking statements, including in relation to Cantex's proposed strategy, plans and objectives. These forward looking statements are applicable only at the date of this presentation. Such forward looking statements involve known and unknown risks, uncertainties and other important factors beyond the control of Cantex that could cause the actual performance or achievements of Cantex to be materially different from such forward-looking statements. Accordingly, you should not rely on any forward-looking statements and Cantex accepts no obligation to disseminate any updates or revisions to such forward-looking statements. In ground values provided in the presentation are for information purposes only and may not represent commercially exploitable deposits.

Technical content within this presentation is approved by Chad Ulansky, PGeo.

# Overview

## CANTEX HAS DISCOVERED HIGH GRADE SILVER-LEAD-ZINC MINERALIZATION

### Large Land Position

100% ownership of 21,500 hectare North Rackla project

**2019 Exploration Budget of C\$10MM**



**Favourable Ownership Structure**

**Led by Dr. Charles Fipke**

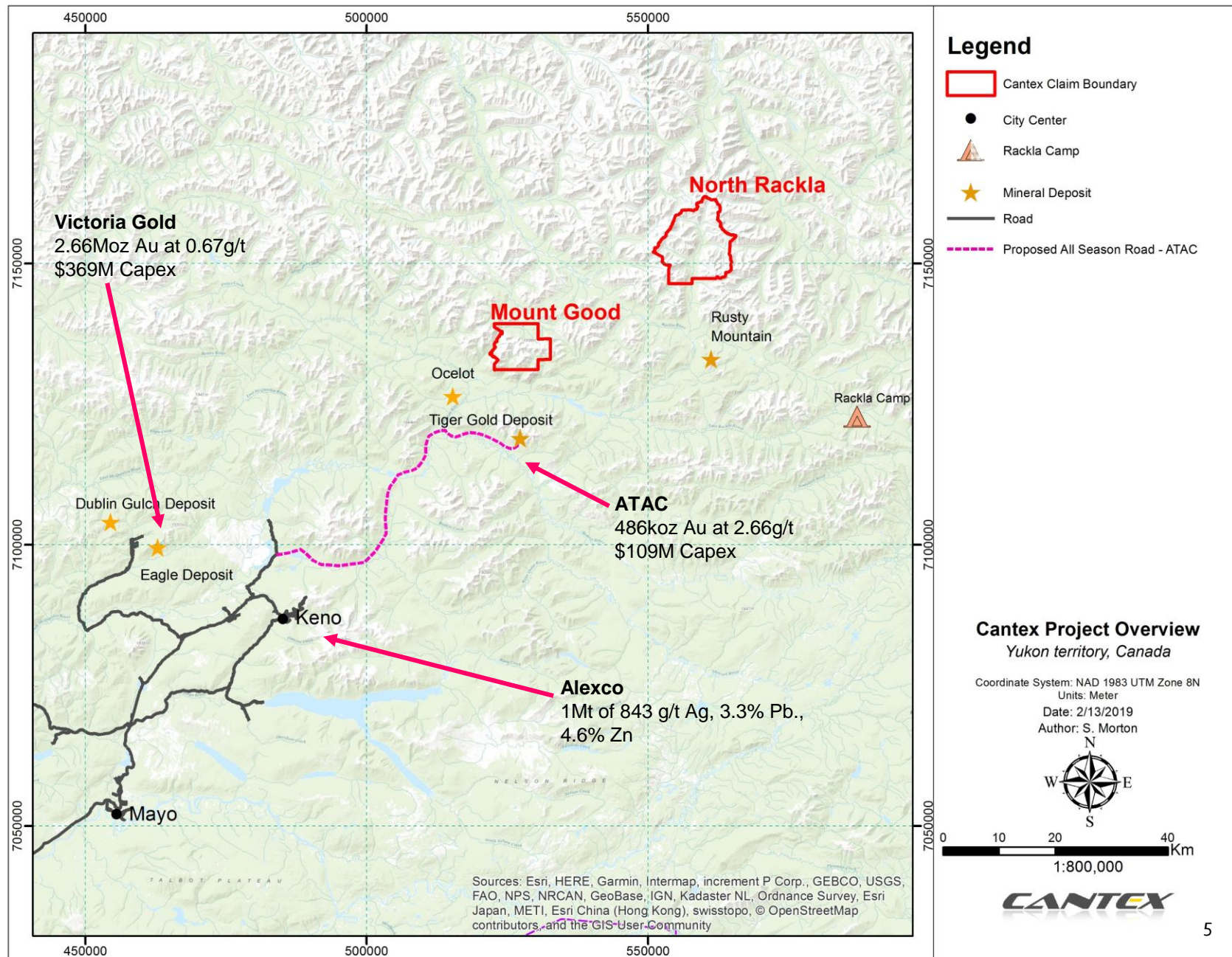
Founder of the Ekati Diamond Mine

# Yukon Project – Sedex Discovery

- ❖ 2014 – Prospecting of anomalous soil-talus sample results discovers significant gossan (“Discovery Zone”)
- ❖ 2015 – With favourable grab sample results in hand expanded prospecting and rock sampling program extends mineralization almost 1km along strike
- ❖ 2016 – Trenching of Discovery Zone undertaken
  - ❖ Prospecting extends mineralization 2km to “Extension Zone”
  - ❖ Late season drill program undertaken on Extension Zone
    - ❖ Intersects oxidized mineralization near surface
- ❖ 2018 – Drill program tests fresh mineralization at depth
  - ❖ Mineralized zones **average over 20% lead plus zinc** with additional 100 g/t silver

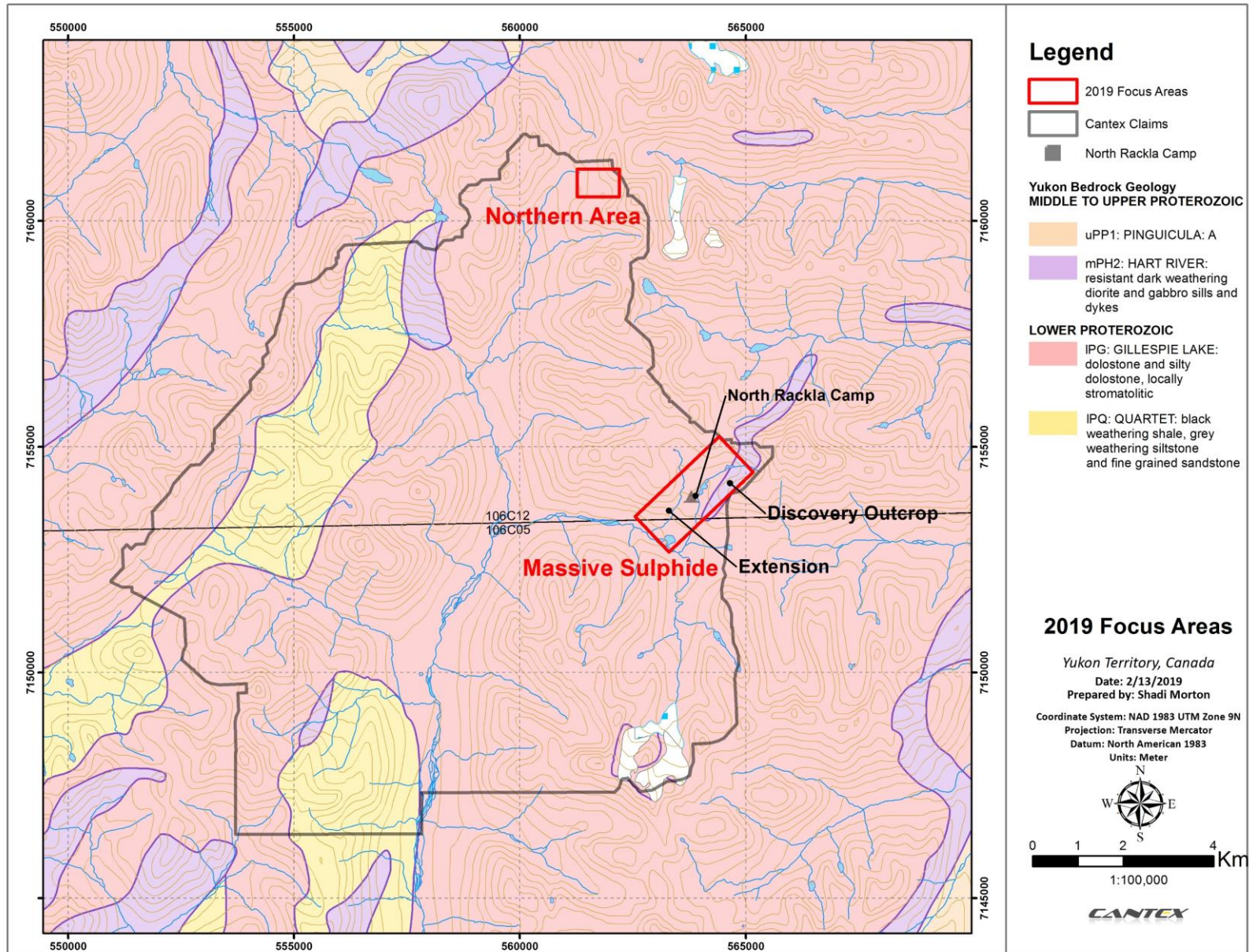


# Land Position





# 2019 Focus Areas

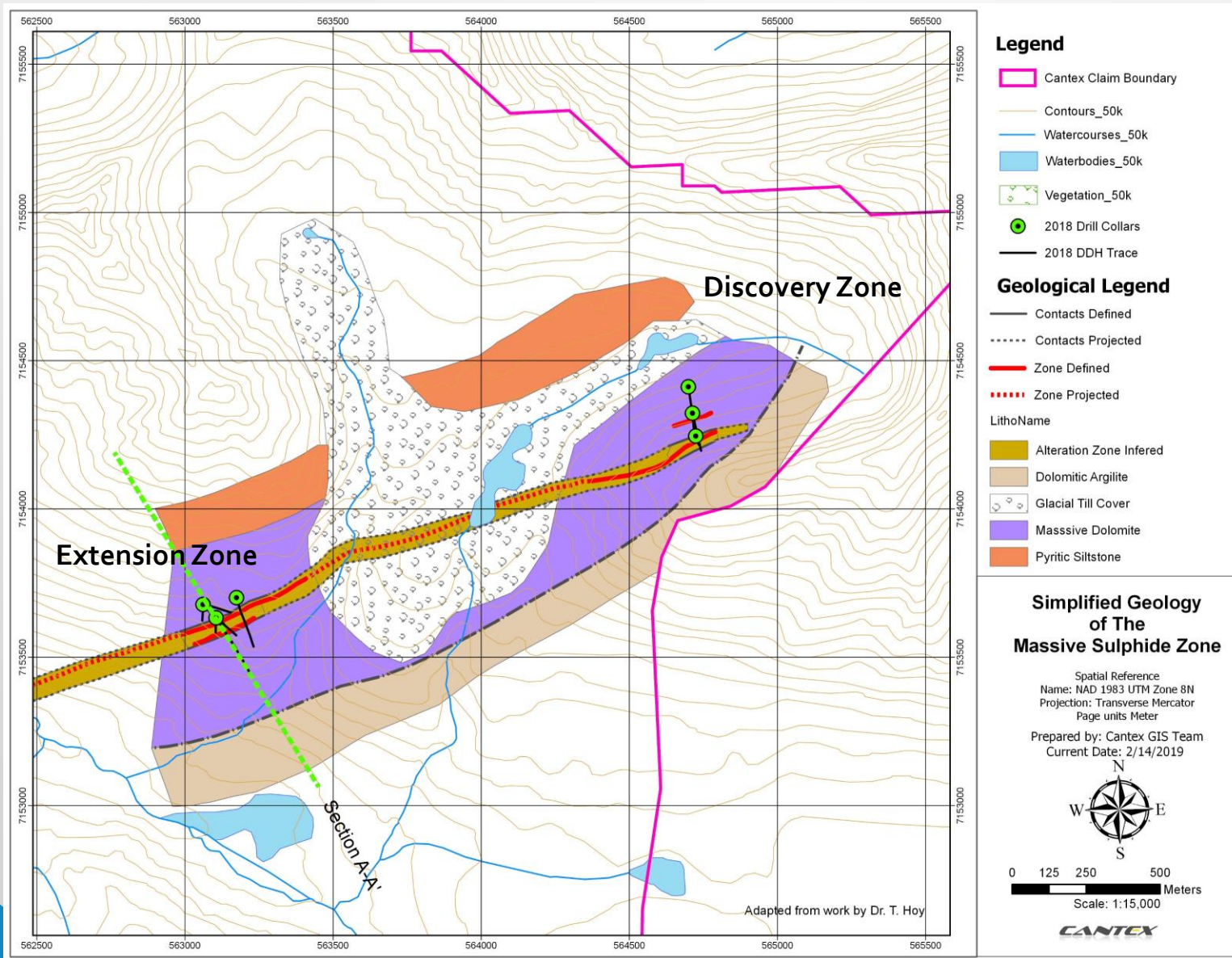


# Massive Sulphide Discovery

- The Massive Sulphide Zone stretches over 2.4 km long and hosts elevated silver, lead and zinc values
- The mineralization is hosted in Proterozoic aged rocks and contains elevated manganese values – similar to the Broken Hill deposit in Australia which is the world's largest silver – lead – zinc deposit



# Massive Sulphide Plan View







## Discovery Zone

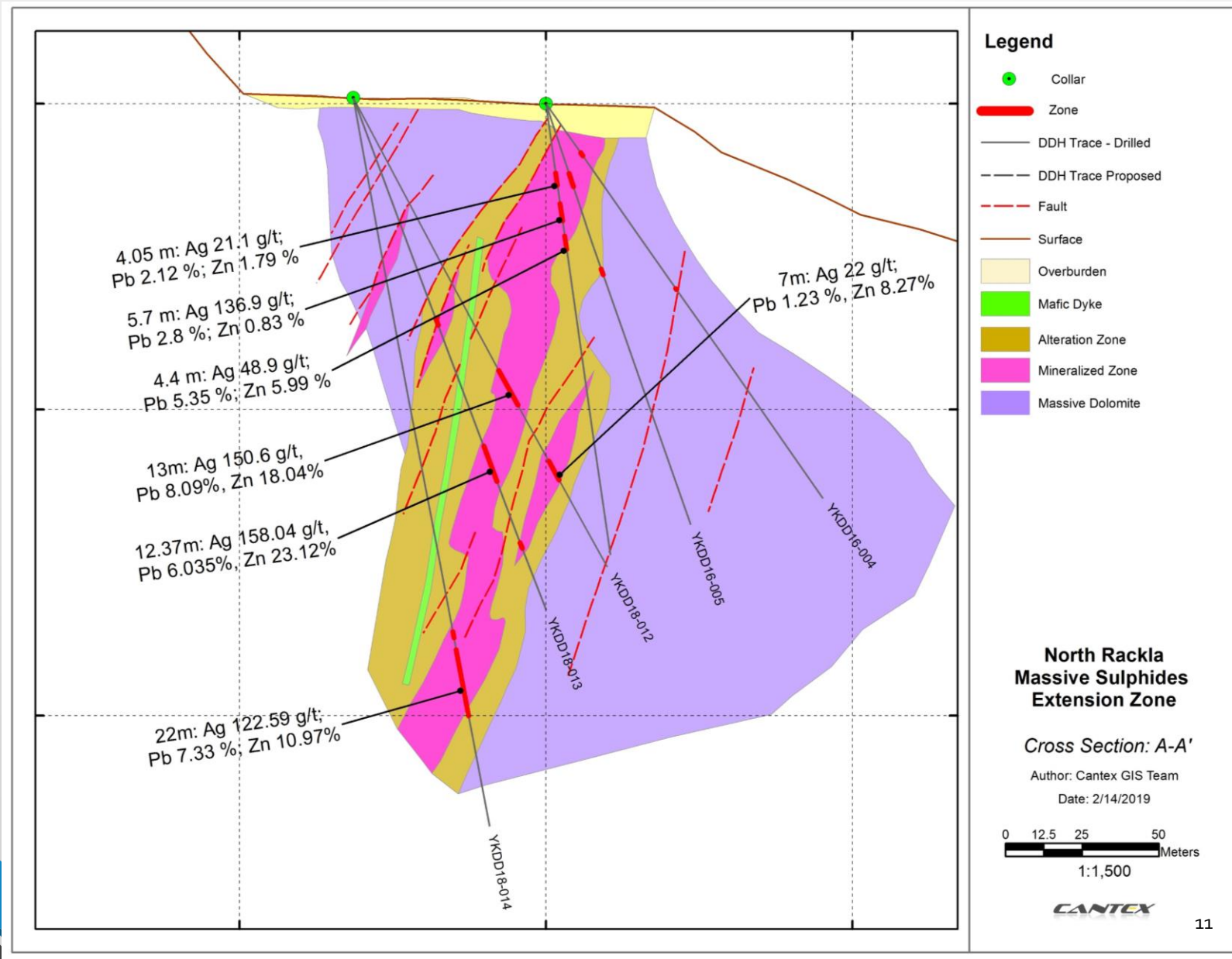




Looking NNE along strike  
of the mineralized zone



# Extension Zone: Cross Section A-A'



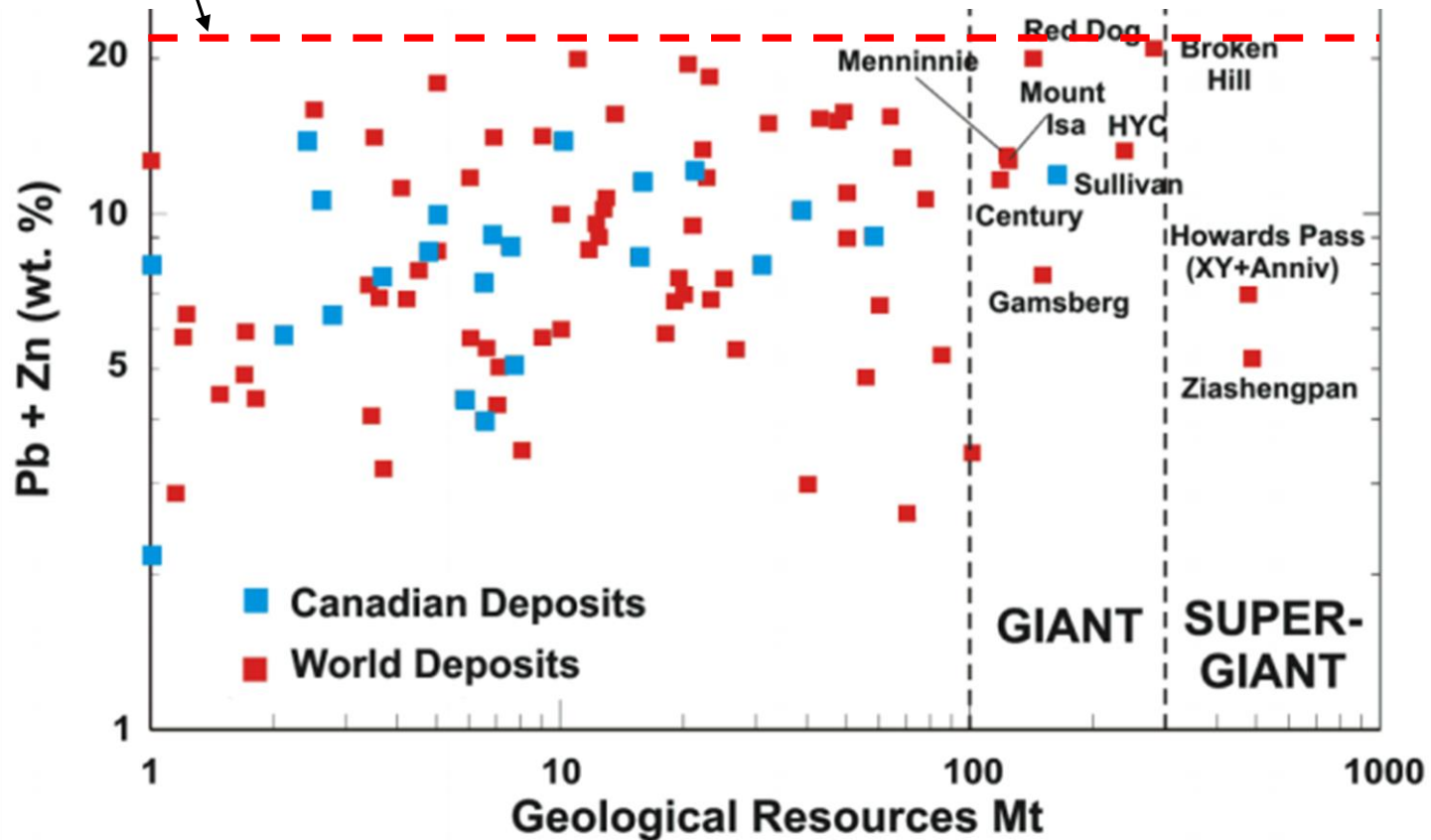


Hole	From (m)	To (m)	Length (m)	Silver (ppm)	Lead (%)	Zinc (%)
YKDD18-012	100.87	113.87	13.00	150.6	8.09	18.04
Including	102.87	107.87	5.00	277.8	14.01	35.36
	134.74	141.74	7.00	22.0	1.23	8.27
YKDD18-013	77.18	79.28	2.10	14.7	0.98	3.06
	121.45	133.82	12.37	158.0	6.04	23.12
Including	123.35	129.00	5.65	207.5	7.43	40.24
and	131.00	131.80	0.80	322.0	15.60	47.38
	155.10	157.12	2.02	19.5	1.02	3.14
YKDD18-014	177.40	179.40	2.00	46.5	0.18	0.49
	183.40	205.40	22.00	122.6	7.33	10.97
Including	184.40	186.40	2.00	158.0	6.93	37.65
and	190.40	192.40	2.00	475.5	24.49	13.73
YKDD18-015	124.28	133.28	9.00	67.2	5.48	10.48
Including	127.28	128.28	1.00	233.0	9.96	35.52
YKDD18-016	99.77	104.27	4.50	45.6	16.92	1.74
	106.27	114.90	8.63	142.1	11.44	18.36
Including	107.27	109.27	2.00	272.0	22.94	31.29
and	111.27	112.77	1.50	210.0	14.37	29.15

# Extension Zone Results

# Massive Sulphide Discovery – Comparable to the Highest Grade Deposits Globally

Extension Zone averages over 20% lead plus zinc





# Upcoming Catalysts

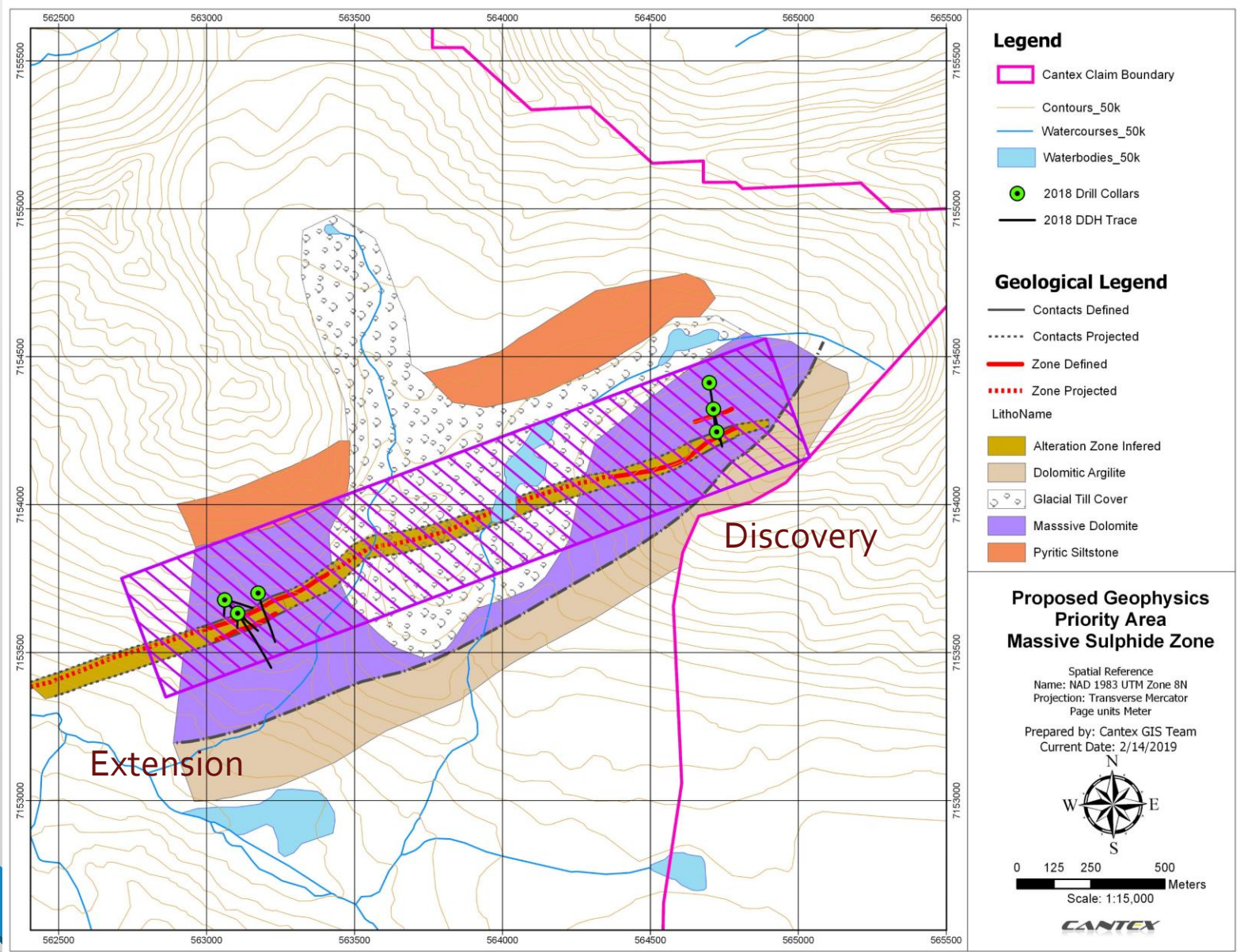
- Cantex's goal is to define a world class silver-lead-zinc deposit
- In 2019 we intend to make a significant step towards this by drill testing almost 1km of strike length to a depth, in places, of up to 550m
- Should we intersect mineralization similar to that intersected last year this will be a significant deposit
- There remains additional upside potential within the additional 1400+m of strike length and to depth



# Yukon: 2019 Plans

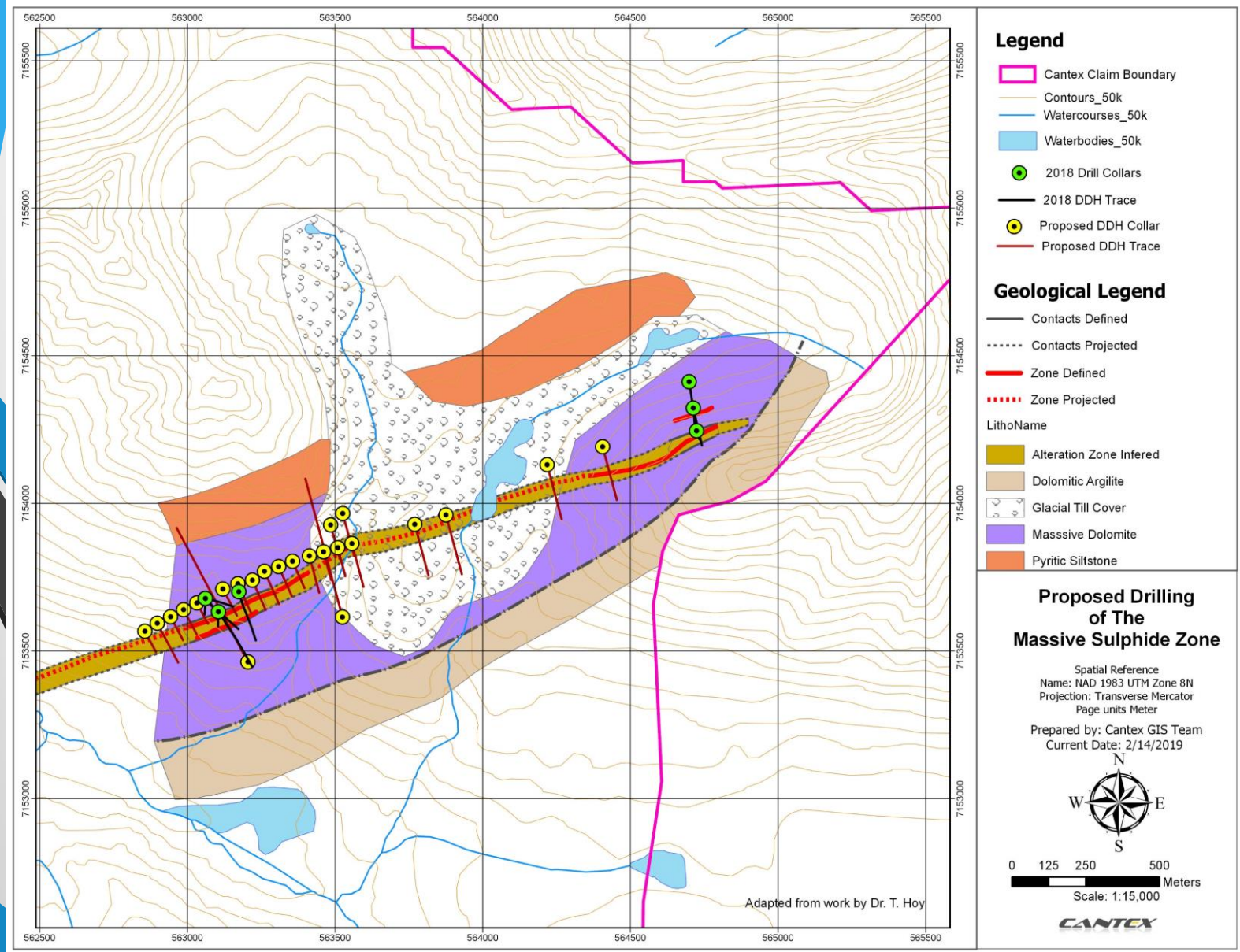
- Ground geophysical program over the massive sulphide in spring (likely magnetic, electromagnetic, induced polarization and gravity)
- Commence drill program late spring with 3 drills
  - Step out drilling along strike and to depth from recent discovery
  - Test mineralization at the northern polymetallic discovery
  - Total of 18,000m
- Infill geochemical sampling around previously identified anomalies in N. Rackla claims

# Spring Ground Geophysical Program



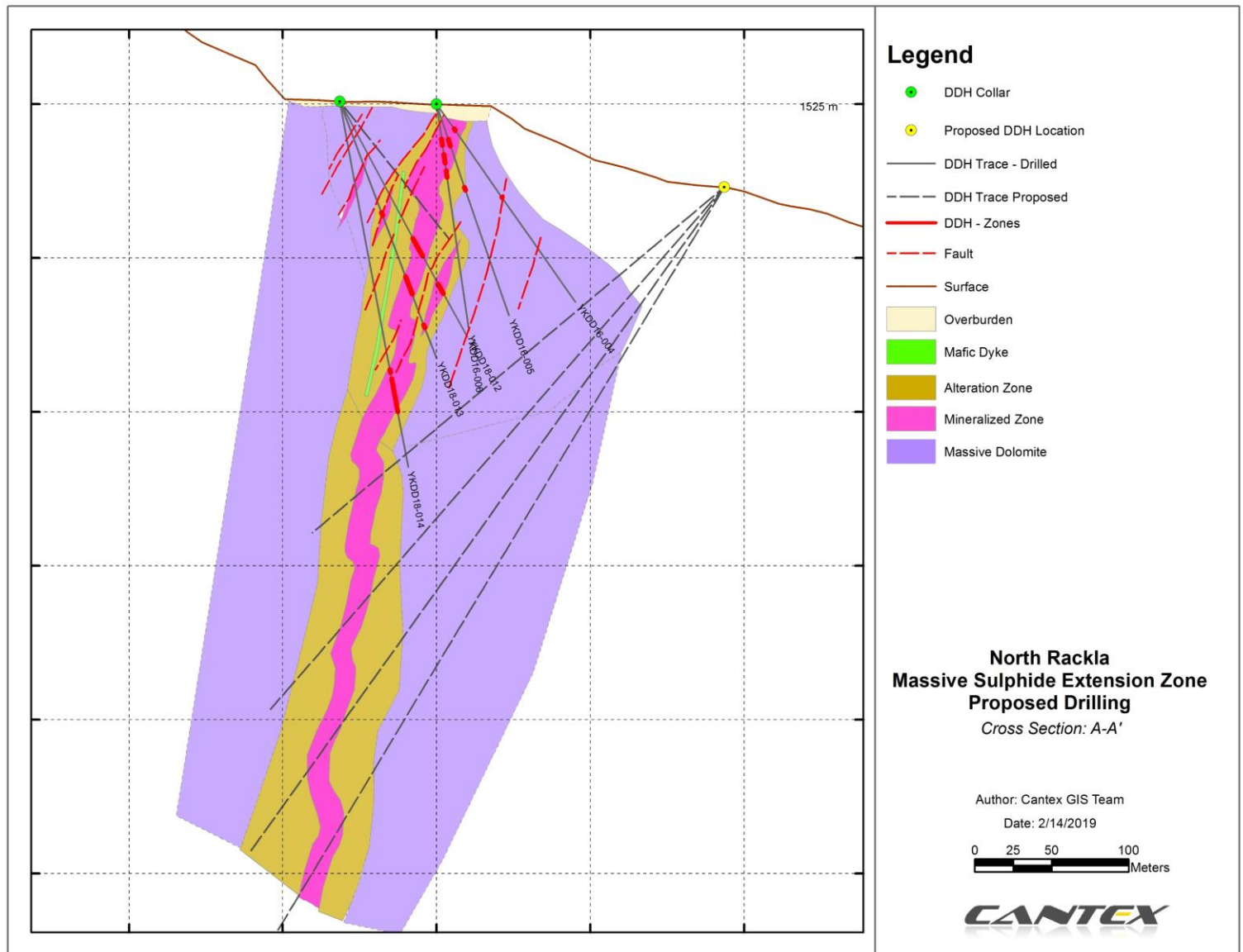


# Extensive 2019 Drill Program



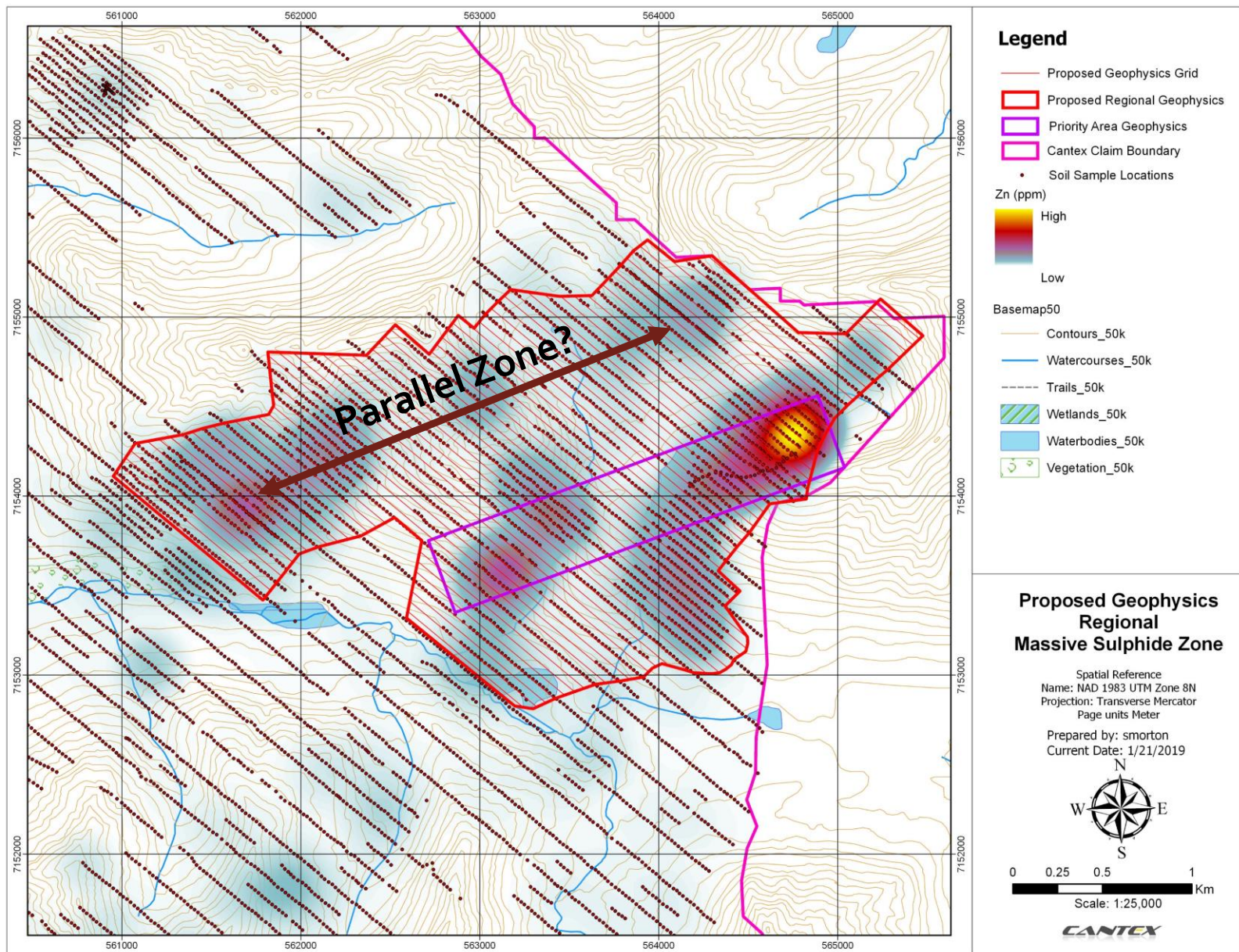
Drilling: 75 holes, 17,000m





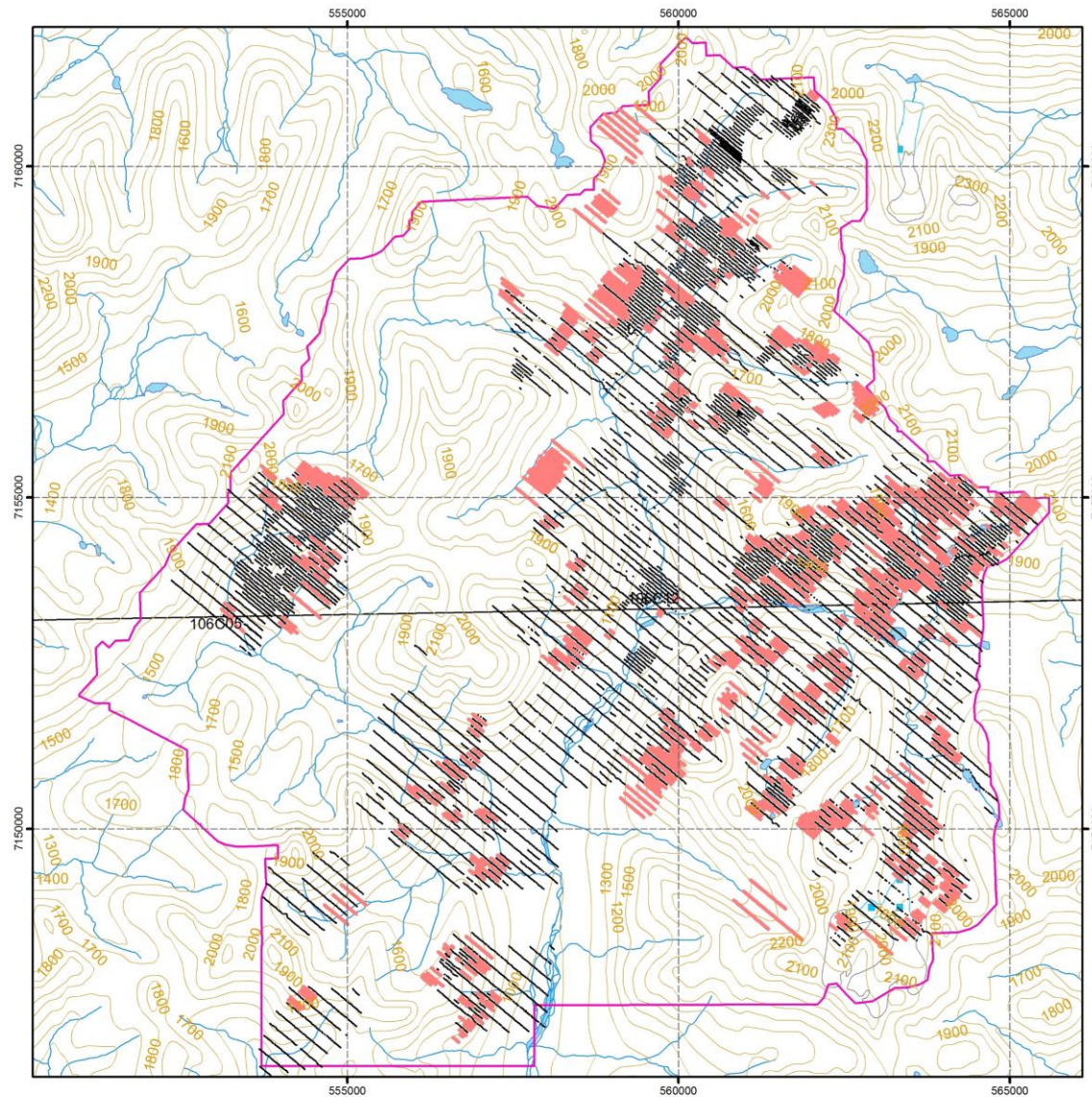
# Proposed Drilling - Cross Section

# Regional Geophysics





# Regional Soil-Talus Sampling



## Legend

- Cantex Claim Boundary
- River
- Lake
- Contour
- 2019 Proposed Soil-Talus Sample
- Existing Soil-Talus Sample

## Proposed Soil-Talus Sampling

### North Rackla Property

Yukon Territory, Canada

Date: 1/22/2019

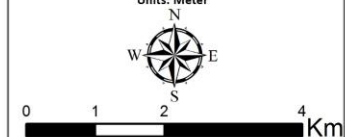
Prepared by: Shadi Morton

Coordinate System: NAD 1983 UTM Zone 8N

Projection: Transverse Mercator

Datum: North American 1983

Units: Meter



1:80,000

**CANTEX**



# North Rackla, Yukon

## Northern Area Discovery

- The Northern Area contains polymetallic mineralization in a stromatolitic limestone which is capped by a sandy bedded dolomitic unit
- Prospecting, rock sampling and trenching of the mineralization, which outcrops over a 120m by 150m area, have returned results as high as:
  - 15.75 g/t gold
  - 377 g/t silver
  - 11.0% lead
  - 32.5% zinc
- Three holes totaling 1,000m planned for this summer

# Northern Area

## Legend

- ★ Rock / Grab Sample
- Soil / Talus Sample
- Trench Sample Mid-Point
- Drill Collar
- Drill hole Trace
- - - Proposed Drilling

## Lithological Units

- Dolopackstone\_Siltstone
- Dolopackstone\_Stromatolites
- Talus

233 g/t Ag; 2.69% Pb; 32.47% Zn

15.75 g/t Au; 27.8 g/t Ag

Trench A: 1.5 m of 1.27g/t Au; 13.8 g/t Ag

1.04 g/t Au; 169 g/t Ag;  
1.24% Pb; 22.00% Zn

11.40 g/t Au; 33 g/t Ag

Trench I: 377 g/t Ag, 11.0% Pb, 2.48% Zn

5.86 g/t Au; 95 g/t Ag; 3.24% Pb

5.29 g/t Au; 105 g/t Ag; 1.16% Pb

2.91 g/t Au; 87 g/t Ag; 1.64% Pb; 19.20% Zn; 0.30% Cu

## North Rackla Drilling Northern Gold Area Yukon Territory, Canada

Coordinate System: NAD 1983 UTM Zone 8N  
Projection: Transverse Mercator  
Datum: North American 1983  
Units: Meter  
Date: 11/8/2018

Author: S. Morton

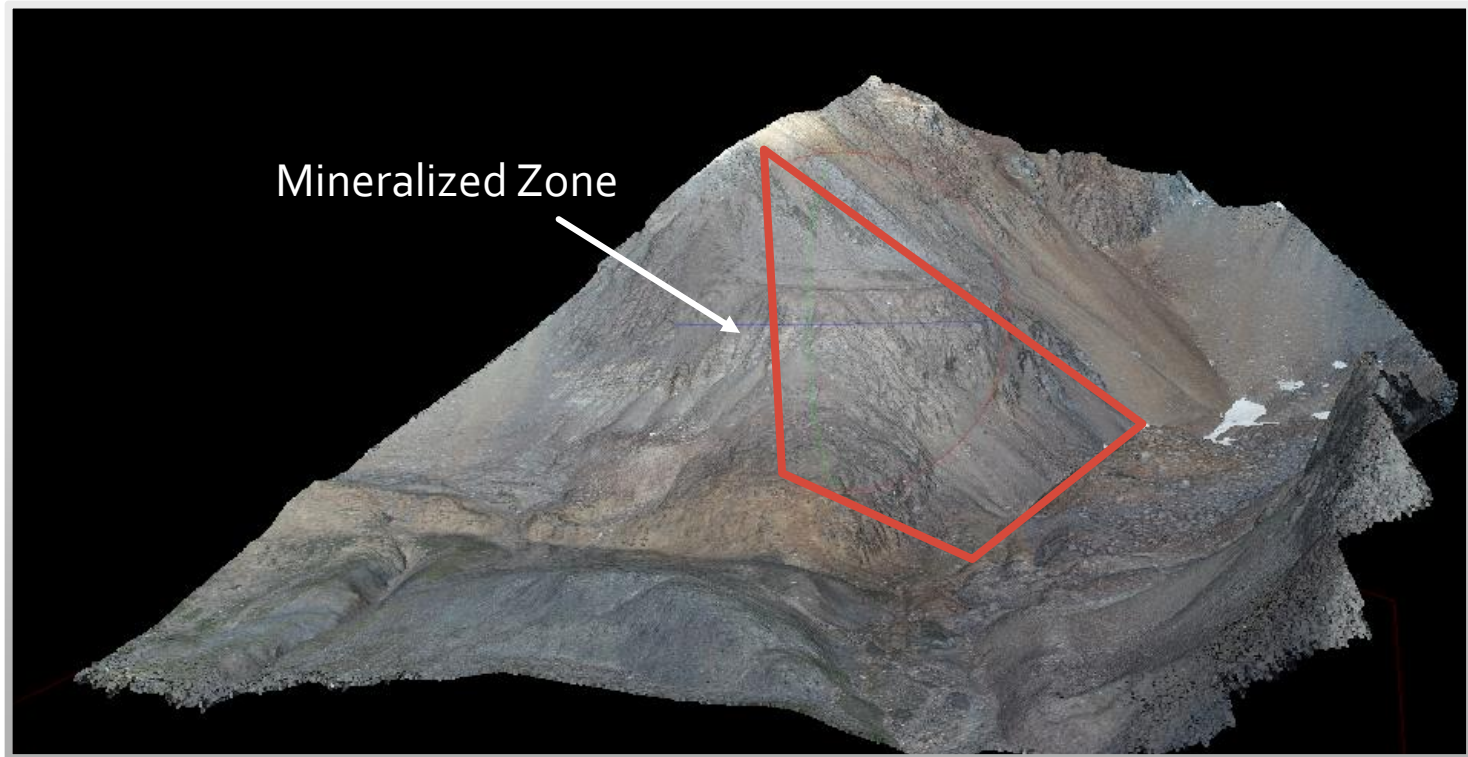


0 12.5 25 50  
Meters

1:2,000



# Northern Zone



Mineralization in grey stromatolitic limestone capped by brown silty carbonate

# Management and Directors

Strong Leadership  
with a Proven Track  
Record

- **Dr. Charles “Chuck” Fipke (Chairman)**

- With over 40 years of experience in the minerals exploration business Mr. Fipke is credited with the discovery the Ekati Diamond Mine, in the Northwest Territories, Canada’s first Diamond mine after founding Dia-Met Minerals Ltd. Later sold to BHP Billiton

- **Chad Ulansky (B.Sc.) (President & Chief Executive Officer)**

- Mr. Ulansky is a trained geologist by background with over 25 years experience in the minerals exploration business and focus on diamond bearing deposits. He was involved in the Ekati Diamond Mine discovery by Dia-Met Minerals Ltd. and is currently CEO of TSXV listed Metalex Ventures Ltd and Northern Uranium Corp as well as a director of Dunnedin Ventures Inc and Solstice Gold Corp.

- **Keiven Bauer (CMA) (Chief Operating Officer)**

- Mr. Bauer has held divers general management and finance responsibilities in the manufacturing and distribution business. He holds a Bachelor of Commerce degree from the University of Calgary and is a Certified Management Account (BC).

- **Jennifer Irons (CA) (Chief Financial Officer)**

- Ms. Irons graduated from the University of Alberta with a Bachelor of Commerce degree and began her accounting career with a national firm in 2003. Prior to joining Cantex in 2013, Ms. Irons held the position of Manager with a Kelowna based accounting firm where she served both individual and corporate clients. Ms Irons is a director of Northern Uranium Corp and is the CFO of Metalex Ventures.

- **Kathrine MacDonald (BSc., BComm) (Director)**

- Ms. MacDonald is a graduate of the University of British Columbia and has over 30 years experience in the Finance Industry including Investment Banking and Management, Finance, and Corporate Relations for public mining companies.

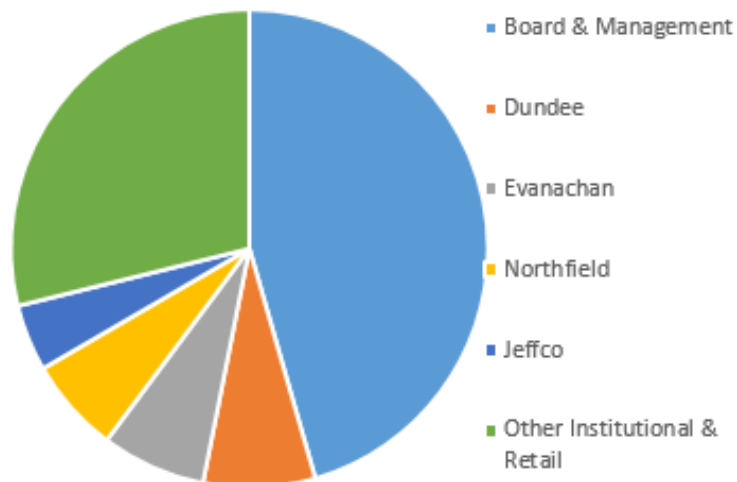
- **Vern Frolick (LLB) (Director)**

- Mr. Frolick is a graduate of the Windsor School of Law and was called to the Ontario Bar in 1976 and the BC Bar in 1982. Currently he is a Crown Prosecutor in Penticton. He is also a director of Northern Uranium Corp.



# Share Structure and Working Capital

## Ownership Structure



- Issued and outstanding (Feb 25, 2019): 29,563,252
  - Warrants outstanding (average strike price \$0.20) 7,074,168
  - Options outstanding (average strike price \$0.86) 1,156,268
- Recent share price: \$0.80
- Market capitalization: \$24M
- Cash position: \$800K

## Share Price History



For more  
information

Investor Relations

[info@cantex.ca](mailto:info@cantex.ca)

250 860 8582

CANTEX.CA