

CANTEX

TSXV:CD



HIGH-GRADE SILVER-LEAD-ZINC-GERMANIUM IN THE YUKON, CANADA

July 2026

THE RIGHT PROJECT AT THE RIGHT TIME

- *“Cantex’s North Rackla project hosts a particularly prospective mineralizing system that displays similarities to some large, famous silver-zinc-lead deposits in Australia, notably Broken Hill, New South Wales. We are intrigued with the high-grade nature of drill intercepts to date including very high contents of germanium, an increasingly critical metal. This is a project that needs advancing, even in a very tough market, and we are happy to become new shareholders in this exciting exploration story.” – Dr Quinton Hennigh*

- *“The US government is now looking forward to partnering with alternate Germanium suppliers such as Canada. Cantex Mine Development Corporation has been in an advantageous phase as they have identified a rich Germanium reserve at the sulfide project in the North Rackla region.” – Peter Schmidt, Chemanalyst*

DISCLAIMER

This presentation does not constitute or form part of any offer for sale or solicitation of any offer to buy or subscribe for any securities in Cantex Mine Development Corp. (“Cantex”), nor shall it or any part of it form the basis of, or be relied on in connection with, or act as any inducement to enter into, any contract or commitment whatsoever. No reliance may be placed for any purpose whatsoever on the information or opinions contained in this presentation or on any other document or oral statement or on the completeness, accuracy or fairness of any such information and/or opinions. No undertaking, representation, warranty or other assurance, express or implied, is made or given by or on behalf of Cantex or any of its respective directors, employees or advisers, as to the accuracy or completeness of the information or opinions contained in this presentation, and (save in the case of fraud) no responsibility or liability is accepted by any of them for any such information or opinions or for any errors, omissions, misstatements, negligence or otherwise contained or referred to in this presentation.

The slides and the accompanying verbal presentation are confidential and the slides are being supplied to you solely for your information and may not be reproduced or distributed to any other person or published, in whole or in part, for any person. The slides contain forward-looking statements, including in relation to Cantex’s proposed strategy, plans and objectives. These forward looking statements are applicable only at the date of this presentation. Such forward looking statements involve known and unknown risks, uncertainties and other important factors beyond the control of Cantex that could cause the actual performance or achievements of Cantex to be materially different from such forward-looking statements. Accordingly, you should not rely on any forward-looking statements and Cantex accepts no obligation to disseminate any updates or revisions to such forward-looking statements. In ground values provided in the presentation are for information purposes only and may not represent commercially exploitable deposits.

Technical content within this presentation is approved by Chad Ulansky, Pgeo, President and CEO.

STRONG LEADERSHIP WITH A PROVEN TRACK RECORD

Chairman & Team Discovered Canada's First Diamond Mine, Making Canada the Third Largest Producer by Value

Dr. Charles Fipke C.M., Geologist **Chairman**

With over 40 years of experience in the mineral exploration business Mr. Fipke is credited with the discovery the Ekati Diamond Mine, in the Northwest Territories, Canada's first diamond mine after founding Dia-Met Minerals Ltd. later sold to BHP Billiton.

Chad Ulansky B.Sc., PGeo **President & Chief Executive Officer**

Mr. Ulansky is a trained geologist by background with over 25 years experience in the mineral exploration business and focus on diamond bearing deposits. He was involved in the Ekati Diamond Mine discovery by Dia-Met Minerals Ltd.

Jennifer Irons CPA, CA **Chief Financial Officer**

Ms. Irons graduated from the University of Alberta with a Bachelor of Commerce degree and began her accounting career with a national firm in 2003. Prior to joining Cantex in 2013, Ms. Irons held the position of Manager with a Kelowna based accounting firm where she served both individual and corporate clients.

Vern Frolick LLB **Director**

Mr. Frolick is a graduate of the Windsor School of Law and was called to the Ontario Bar in 1976 and the BC Bar in 1982. Currently he is a Crown Prosecutor in Penticton.

Kathrine MacDonald BSc., BComm **Director**

Ms. MacDonald is a graduate of the University of British Columbia and has over 30 years experience in the Finance Industry including Investment Banking and Management, Finance, and Corporate Relations for public mining companies.

Jason Granger CPA, CA, CFA, MBA **Director**

Mr. Granger has over 20 years of experience in capital markets, corporate finance and accounting in a range of sectors including industrials and natural resources. He began his career with PricewaterhouseCoopers, and subsequently worked with BMO Capital Markets in equity research covering Transportation and Industrials. Jason moved on to work in corporate development, investor relations and transaction diligence roles for Newalta (oilfield services), Diversified Royalty Corp., and Ernst and Young before joining Kel-Ex Development Ltd as COO.

A WORLD-CLASS SILVER-LEAD-ZINC-GERMANIUM DEPOSIT

THE COMPANY'S NEXT OBJECTIVE IS BRINGING THE NORTH RACKLA PROJECT INTO PRODUCTION PHASE

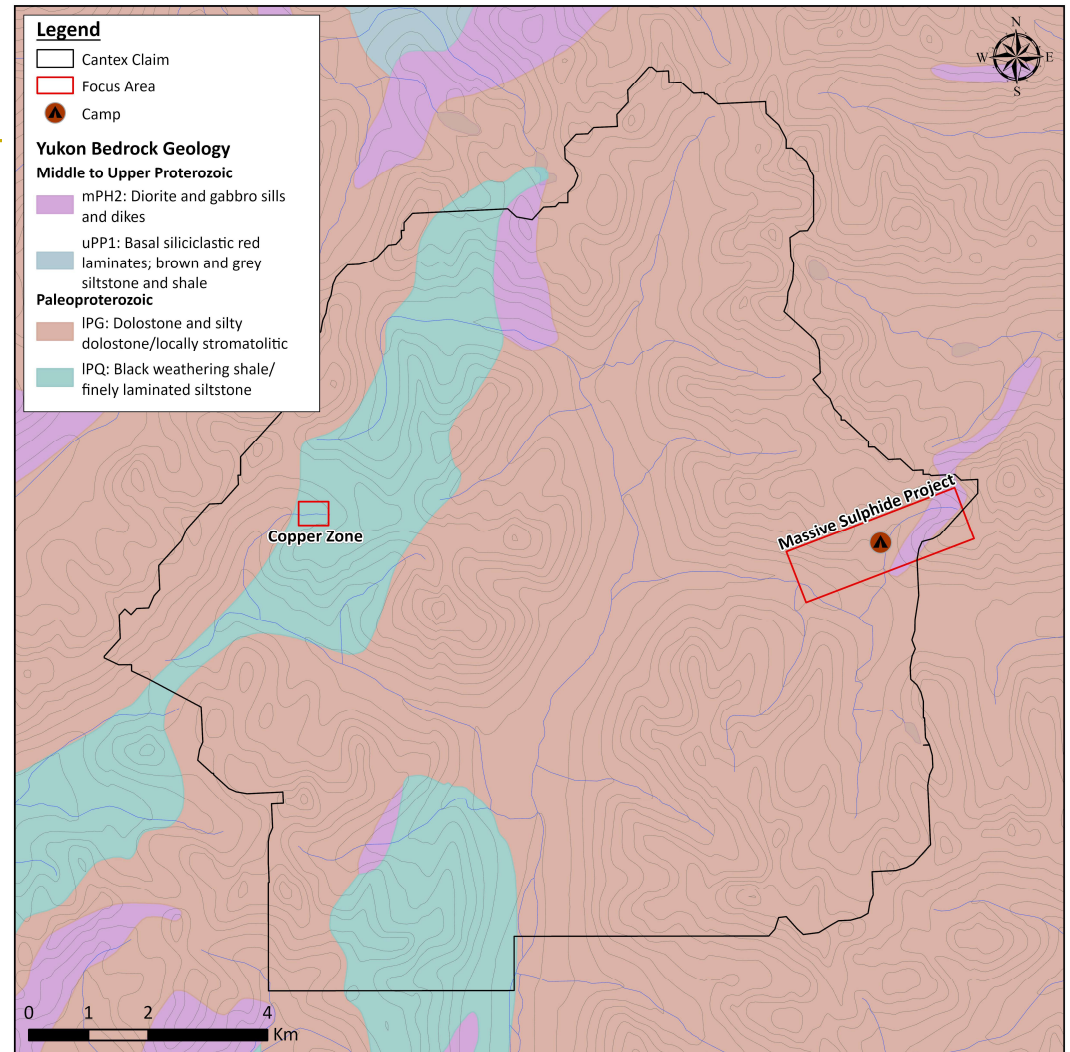
- **High-grade Silver-Lead-Zinc-Germanium Project in the Yukon**
 - Amongst the highest-grade discoveries worldwide.
- **100% ownership of North Rackla** – a large land position with room for exploration growth.
- **~100,000m drilled to date:**
 - Drill testing over 2.80km of strike length.
 - Deepest intercept more than 700 meters with true width of 23.67 meters.
- **Advantageous metallurgical results**
- **Experienced management team** – Chairman, Dr. Charles Fipke, founder of the Ekati Diamond Mine, and his employees discovered Canada's First diamond mine. Which made Canada the third largest diamond producer by value.

The Ekati Mine employed 1,500 people and produced billions of dollars since being brought to production over 25 years ago.
- **Favorable ownership structure** – led by Dr. Charles Fipke, founder of the Ekati Diamond Mine.



THE NORTH RACKLA PROPERTY

- Work on the North Rackla Property has largely been focused on the **Massive Sulphide Project** which consists of the Main Zone and GZ Zone.
- Mineralization of the **Massive Sulphide Project** contains the highest-grade Silver-Lead-Zinc-Germanium ever found in North America.
 - Hosted in Proterozoic aged marine carbonate rocks, the deposit contains elevated manganese values like the Broken Hill deposit in Australia – the world's largest Silver-Lead-Zinc deposit, suggesting a similar genesis.
 - Potential scale of the project is impressive with tested strike length of 2.80 plus kilometers and open to the northwest and comparable to the Broken Hill deposit at 8 kilometers strike length.
- Additional zones of interest identified within the North Rackla property
 - Drilling is planned to test many additional anomalies including gold and silver-lead-zinc



MASSIVE SULPHIDE PROJECT

SIMPLIFIED GEOLOGY OF MAIN ZONE

2018 drilling results showed high grade Silver-Lead-Zinc averaging over 20% Lead-Zinc and 100 g/t Silver

- Significant true widths averaging over 9m.
- Drilling in 2018 chased mineralization to 200m depth.

2019-2020 drilling continued to extend mineralization of the Main Zone to depth and along strike

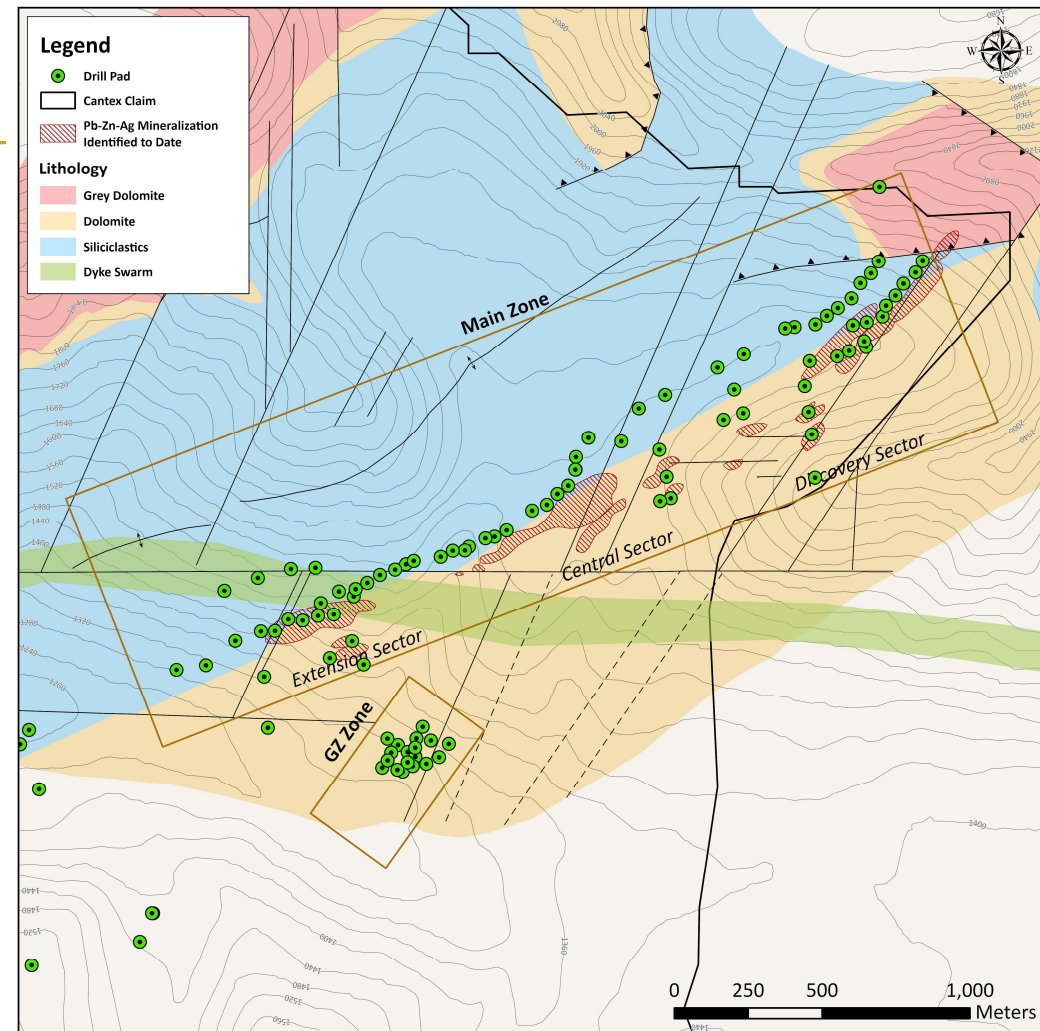
- Mineralization intercepted beyond 700m depth and remains open.

In 2021 drilling extended the strike to 2.1 kilometers and identified a new high-grade zone of mineralization – GZ Zone – 500m from the Main Zone

Work in 2022 increased the strike length to 2.3km

Drilling in 2023 intersected perhaps the best intercept to date (89.25 metres of mineralization) from MZ33

Drilling in 2024 and 2025 extended the strike a further 500m to 2.80km



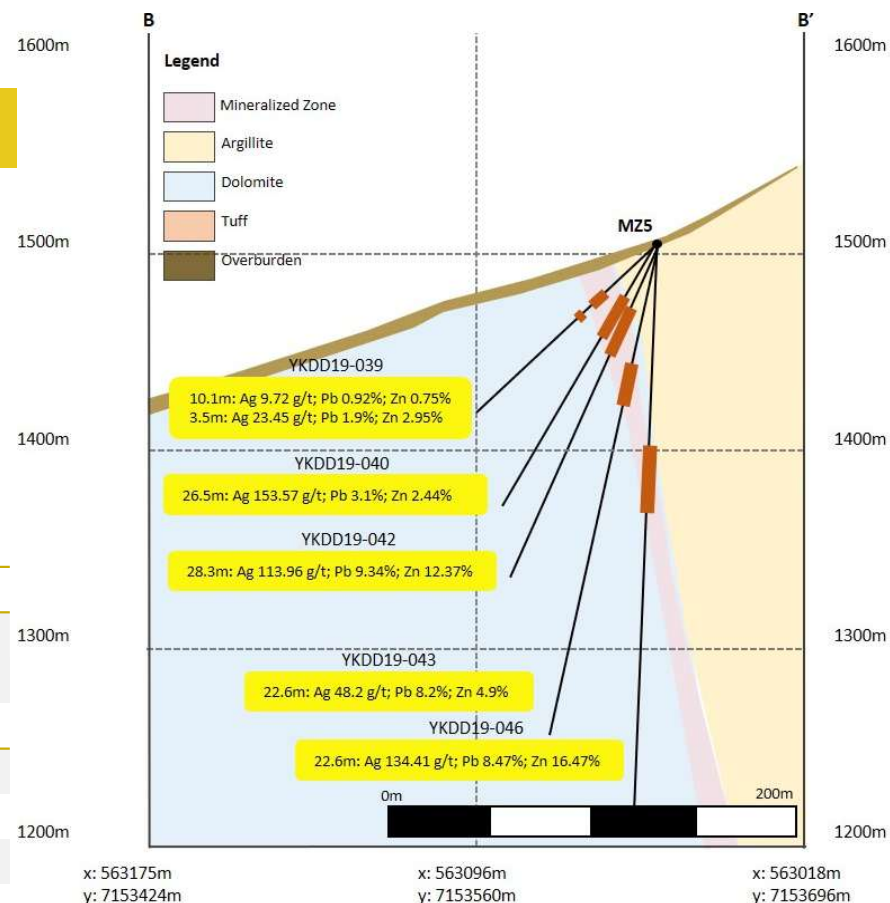
DRILLING: MAIN ZONE – EXTENSION SECTOR

(PAD MZ 5) – Cross Section & Selected Drilling Results

- Results illustrate scale along with elevated grades
- Mineralization continues to be intersected over significant widths with extremely high grades
- 2.80km+ of strike length leaves room to build tonnage

Hole	Length (m)	True Width (m)	Silver (g/t)	Lead (%)	Zinc (%)	Copper (%)	Manganese (%)
YKDD19-040	26.5	16.32	153.57	3.10	2.44	0.42	4.09
YKDD19-042	28.3	14.15	113.96	9.34	12.37	0.09	3.05
And	4.0	2.00	150.50	7.39	36.96	0.05	2.53
And	3.0	1.50	213.33	10.73	41.43	0.10	1.41
YKDD19-043	22.6	8.47	48.20	8.20	4.90	0.04	3.20
Including	3.0	1.12	55.33	21.91	1.48	0.01	4.07
And	1.1	0.41	235.40	49.30	3.72	0.11	1.99
And	3.1	1.16	97.47	6.87	21.23	0.05	3.02

*See press releases dated November 5, 2019



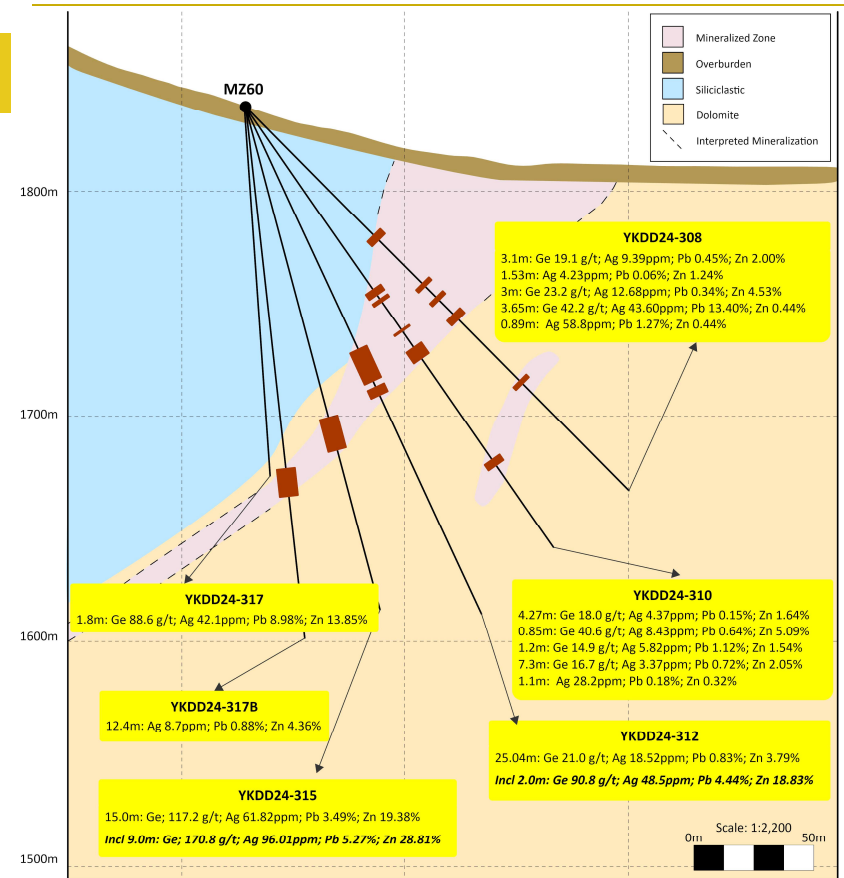
DRILLING: MAIN ZONE – DISCOVERY SECTOR

(PAD MZ 60) – Cross Section & Selected Drilling Results

- Results illustrate scale along with elevated grades
- Strong germanium content adds value

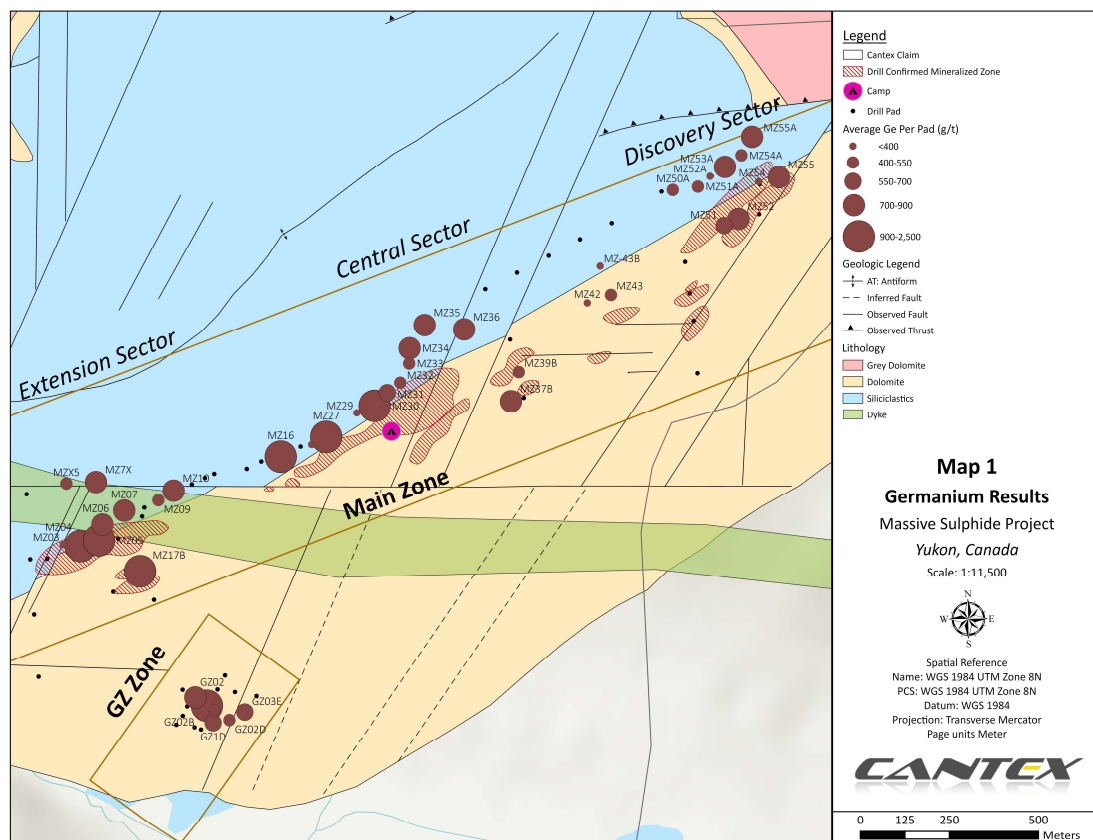
Hole	Length (m)	Silver (g/t)	Lead (%)	Zinc (%)	Copper (%)	Germanium (g/t)
YKDD24-308	3.1	9.39	0.45	2.00	0.08	19.1
And	3.0	12.68	0.34	4.53	0.02	23.2
And	3.65	43.60	13.40	5.89	0.02	42.2
YKDD24-312	25.04	18.52	0.83	3.79	0.08	21.0
Including	2.00	48.50	4.44	18.83	0.03	90.8
YKDD24-315	15.0	61.82	3.49	19.38	0.13	117.2
Including	9.0	96.01	5.27	28.81	0.20	170.8
YKDD24-317	1.80	42.10	8.98	13.85	0.03	88.6

*See press releases dated November 5, 2019



GERMANIUM RESULTS

Potential to Add Significant Monetary and Strategic Value



Sphalerite Concentrate

- Over 600 analyses of sphalerite grains from over 2,300 metres of strike average >650 g/t germanium

Bulk Analyses

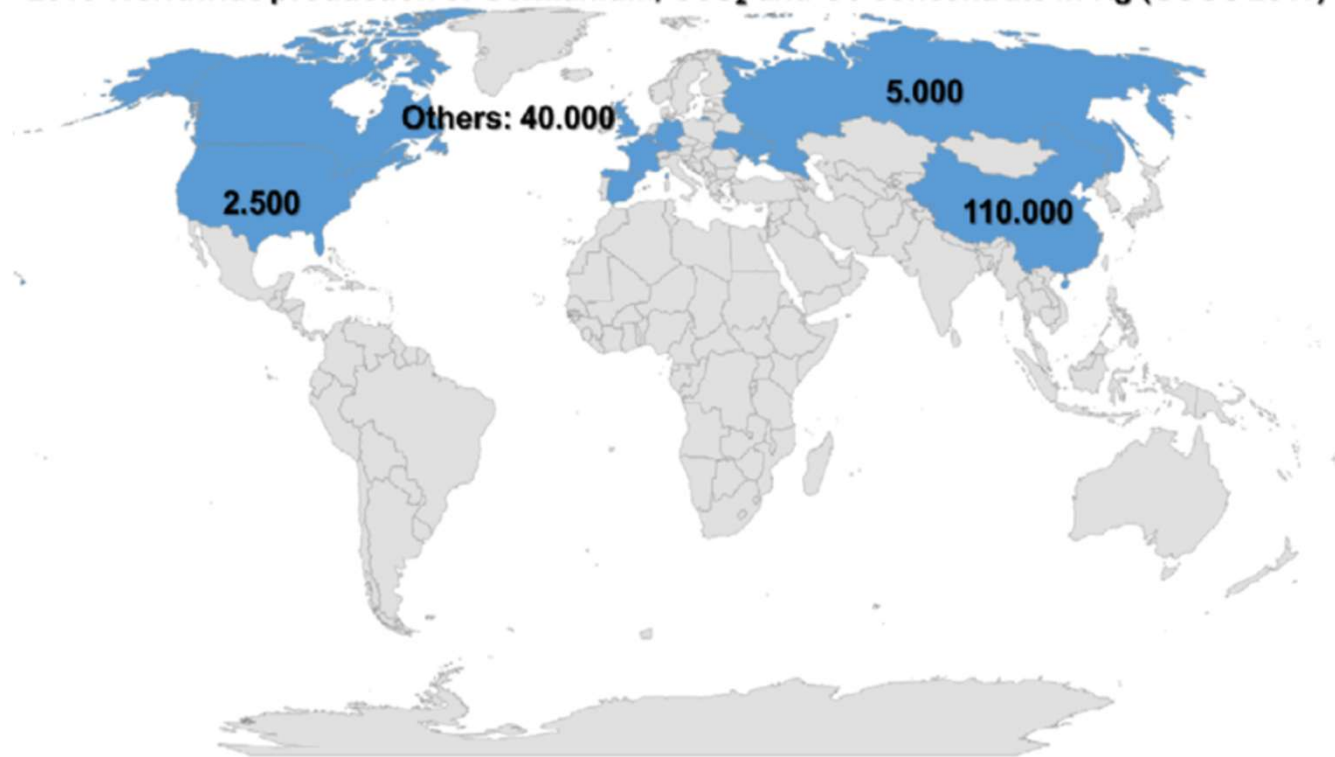
- Bulk analyses of core are now being undertaken on all mineralized intervals. These bulk analyses have reached up to 180 g/t germanium (Average ~50 g/t)
- Germanium is a high value critical metal
 - Currently selling for US\$2.22 per gram
 - (March 2026)

GERMANIUM

New Western Sources Needed – Focus Critical Metal

- Vast majority of germanium (70%) is sourced in China and Russia
 - China prohibited all exports of germanium to USA in Dec 2024
- Teck is the largest western producer of germanium, from the Red Dog Mine in Alaska
 - Contains 104 to 249g/t Ge
 - Processed in Trail, BC

2016 Worldwide production of Germanium, GeO₂ and Ge concentrate in Kg (USGS 2017)



METALLURGICAL RESULTS

XRT – Improves Project Economics Through Sorting

- **Technology Utilized:** X-Ray Transmission (XRT) sensors successfully differentiated dense, metal-bearing target rocks from barren host material based on atomic density.
- **Exceptional Pre-Concentration Performance:** High-efficiency differentiation was achieved across all tested rock size fractions.
- **High Recovery Metrics:** Quantitative metrics prove that an extremely high percentage of target metals report to a concentrated stream representing 70% of the total mass:
 - **Silver (Ag):** 95.0% recovery
 - **Zinc (Zn):** 97.8% recovery
 - **Lead (Pb):** 97.9% recovery
- **Zero Water Dependency:** XRT technology functions efficiently without water, making it ideal as a low-impact, early-stage site concentration method.
- **Substantial Freight Savings:** Removing barren host rock at the mine site can severely reduce logistics and shipping expenses if ore is directly transported to an off-site smelter.
- **Reduced Plant CapEx/OpEx:** Integrating sorting at the front end of the mill keeps barren rock out of the processing facility, significantly lowering down-stream milling costs.

METALLURGICAL RESULTS

Flotation – Exceeds Commercial Benchmarks

- **Conventional Flowsheet Confirmed:** All composites exceeded the commercial benchmark of >45% metal purity at a standard primary grind size of 75 microns, allowing the use of conventional, industry-standard plant designs.
- **High-Grade (HG) Sulphide Concentrates:**
 - **Lead Circuit:** 85.1% recovery at a high-grade 53.6% Pb.
 - **Zinc Circuit:** 80.6% recovery at a premium 61.8% Zn.
 - **Silver Grade:** Exceptional **960 g/t Ag** reporting directly to the lead concentrate.
- **Low-Grade (LG) Sulphide Concentrates:**
 - **Lead Circuit:** Exceptional 91.1% recovery at 51.0% Pb.
 - **Zinc Circuit:** Robust 88.4% recovery at 51.0% Zn.
 - **Silver Grade:** Lucrative **532 g/t Ag** captured in the lead stream.

METALLURGICAL RESULTS

Summary

- **Dual-Option Mining Strategy:**

- High-grade segments show strong potential for direct-ship mining (shipping sorted ore directly to smelters), while lower-grade zones respond exceptionally well to standard flotation circuits.

- **Germanium Expansion Credit:**

- Zinc concentrates carry substantial germanium values, with targeted recovery optimization testing actively underway.

LOOKING FORWARD

CANTEX 2026

- Drilling to expand the 2.80 kilometer strike length of the **Massive Sulphide Project**
 - Sharing a similar genesis model to the world's largest Silver-Lead-Zinc deposits; Broken Hill, Mt Isa & Sullivan, it is suggested that the North Rackla deposit will display similar mineralization trends.
 - These deposits are highest in copper towards the middle, which so far aligns with the North Rackla deposit as we are seeing elevated copper values in the Extension Sector in the northwest portion of the Main Zone.
 - If this trend continues, it would more than double the known strike length.

- Cantex is adding a purpose built heli-portable drill this season which will be tasked with testing multiple anomalies within the claim block
 - These have the potential to yield significant new discoveries
 - Testing both gold and silver-lead-zinc targets

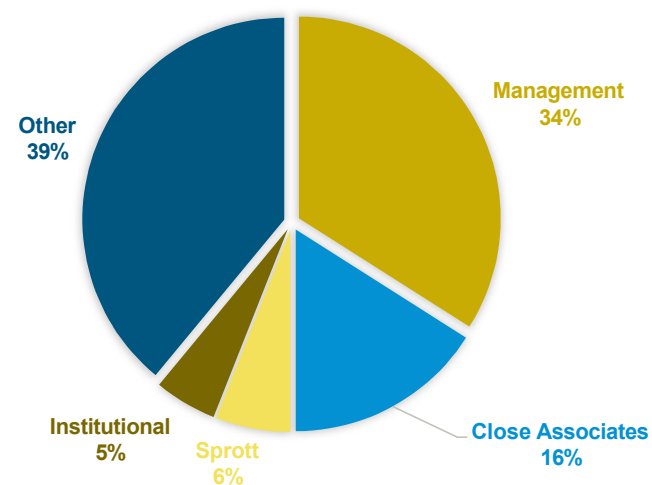
SHARE STRUCTURE & WORKING CAPITAL

TSXV: **CD** | OTCQB: **CTXDF**

Issued and outstanding	159M
Warrants outstanding (average strike price \$0.21)	28,956,396
Options outstanding (average strike price \$0.50)	2,100,000
Recent share price	\$0.23
Market capitalization	\$37M
Cash position	\$1.0M

July 2026

OWNERSHIP





TSXV: CD

INVESTOR RELATIONS

info@cantex.ca

+1 250.860.8582

www.cantex.ca